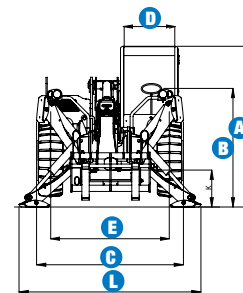
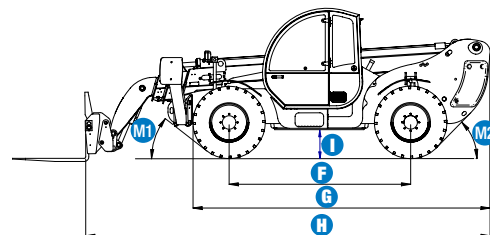


Specifications

MODEL		GTH™-4017 SX	
MEASUREMENTS		Metric	Imperial
Lifting height maximum		17.19 m	56 ft 5 in
Lifting capacity maximum		4,000 kg	8,818 lbs
Lift capacity at maximum height		2,000 kg	4,409 lbs
Lift capacity at maximum reach		700 kg	1,543 lbs
Forward reach maximum		13.33 m	43 ft 9 in
Reach at maximum height		3.56 m	11 ft 8 in
A Height		2.44 m	8 ft
B Height at steering wheel		1.60 m	5 ft 3 in
C Width		2.32 m	7 ft 7 in
D Inside cab width		78 cm	2 ft 7 in
E Track		1.92 m	6 ft 4 in
F Wheelbase		2.95 m	9 ft 8 in
G Length at front wheels		4.83 m	15 ft 10 in
H Length at fork-holder plate		6.57 m	21 ft 7 in
I Ground clearance, centre		43 cm	1 ft 5 in
L Overall width, stabilisers extended		2.89 m	9 ft 6 in
M1 Obstruction angle		40°	40°
M2 Departure angle		46°	46°



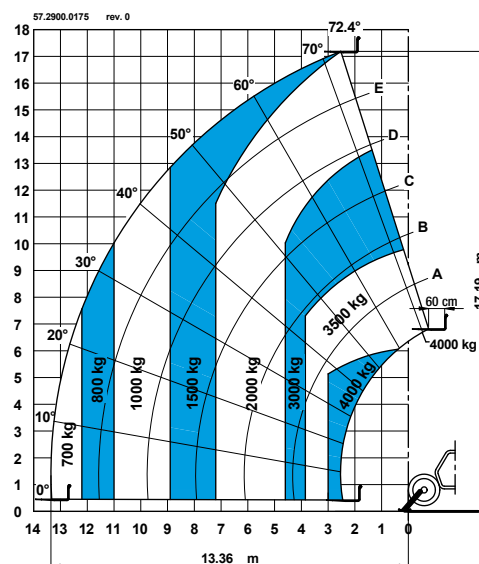
PRODUCTIVITY			
Inside/outside turning radius		2.42 m/4.65 m	8 ft/15 ft 3 in
Break out force		6,000 kg	13,226 lbs
(with 500L shovel SAE J 732/80)			
Towing capacity at dynamometer		3,590 kg	7,914 lbs
Travel speed maximum		28 km/h	15 mph
Fork-holder plate rotation		138°	138°
Chassis levelling on the front axle		+/- 6°	+/- 6°
Floating forks		L 1200 mm Section 120 x 50 mm	L 3 ft 11 in Section 5 in x 2 in
Tyres (DIN 70361)		405/70-24" PR14 8 holes wheel disc	
Lifting/lowering speed		11 sec./8 sec.	11 sec./8 sec.
Extension/retraction speed		26 sec./18 sec.	26 sec./18 sec.

POWER			
Engine		Perkins 1104 D-44T 4-cylinder Turbo Diesel 74.5 kW (101 HP), Tier 3	
Tank capacities			
Fuel		135 L	30 gal
Engine oil		7 L	1.5 gal
Hydraulic oil		150 L	48 gal
Hydraulic output/pressure		95 L/min-270 bar	30 gal/min-3,916 psi

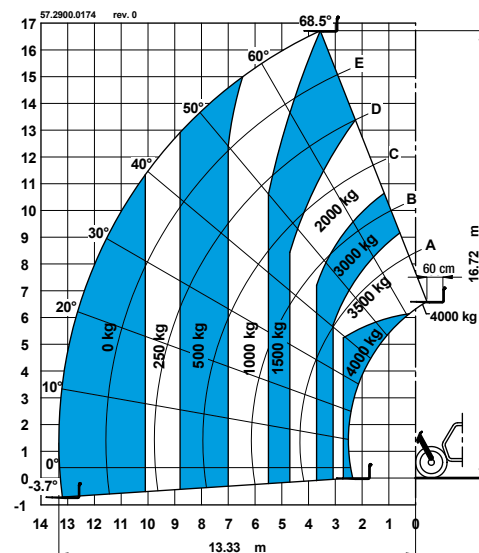
WEIGHT			
Weight*		11,600 kg	25,571 lbs

STANDARD COMPLIANCE		
		Operating cab conforms to ISO3471 (ROPS) and ISO3449 (FOPS) Low emission engine conforms to UE 97/68 directives.

* Weight will vary depending on options and/or country standards



Lift capacity chart (with stabilisers)



Lift capacity chart (without stabilisers)